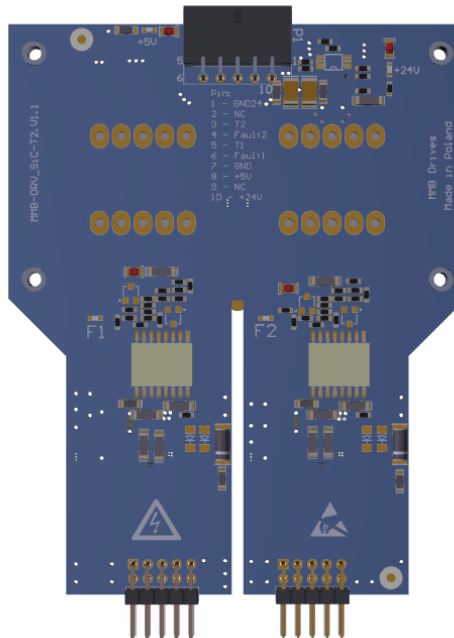
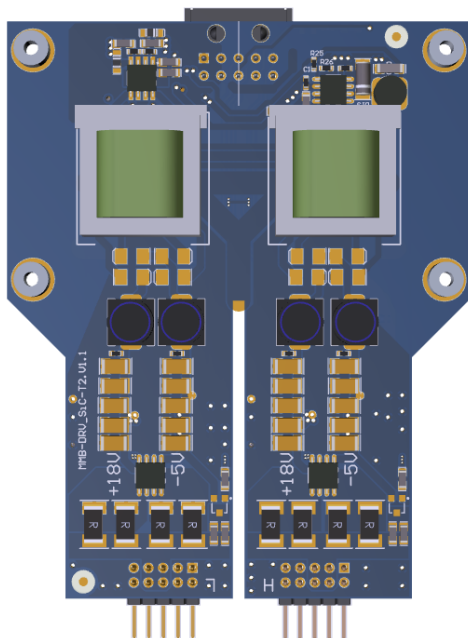


1. Rysunki poglądowe:



2. Specyfikacja:

Sterownik musi spełniać poniższe wymagania:

1. Obudowa:

a. Brak

2. Złącze zasilające:

a. Napięcie zasilania: + 5V DC oraz + 24V DC

b. W postaci wspólnego 10 pinowego złącza

3. Właściwości sterownika:

a. Izolacja bezpieczeństwa – IEC/EN/DIN EN 60747-5-5 VIORM = 1414 Vpeak

b. Napięcie załączenia tranzystora: + 18V DC

c. Napięcie wyłączenia tranzystora: -5VDC

d. Zabezpieczenie przeciw zwarciove

e. Izolowane napięcie zasilania

f. Sterowanie bramkami dwóch tranzystorów w jednym module

4. PCB:

a. Grubość: PCB 1.55mm

b. Warstwy: 2

c. Solder maska: zielona

d. Rodzaj wykończenia: złoczone

e. Opisy: białe (warstwa TOP)

f. Test elektryczny

5. Emisja zakłóceń elektromagnetycznych zgodna z normami europejskimi

6. Wymiary: 100mm x 80mm



Załącznik nr 7

3. BOM

MF	MFPN	Comment	Description	Designator	Quantity
KEMET	C0603C104K5SRAC	100nF/50V	Capacitor	C1_DRV1, C1_DRV2, C15, C16, C43_DRV1, C43_DRV2	6
MURATA	GCM31MR71H105KA55L	1uF	Capacitor	C2_DRV1, C2_DRV2	2
AVX	1206DD106KAT2A	10uF/35V	Capacitor	C3_DRV1, C3_DRV2, C10, C14, C30	5
MURATA	GCM1885C1H101JA16D	100pF	Capacitor	C4_DRV1, C4_DRV2	2
MURATA	GCM21BR71H105KA03L	1uF/35V	Capacitor	C5_DRV1, C5_DRV2, C29, C33	4
KEMET	C0603C471K5SRAC	470pF	Capacitor	C6, C8	2
SAMSUNG	CL10A105KB8NNNC	1uF/50V	Capacitor	C7, C9, C21_PP1, C21_PP2, C31_PP1, C31_PP2, C32_DRV1, C32_DRV2, C36_DRV1, C36_DRV2	10
MURATA	GRM1885C1H102JA01D	1nF	Capacitor	C11_DRV1, C11_DRV2, C13_DRV1, C13_DRV2, C44_DRV1, C44_DRV2	6
MURATA	GRM32ER7YA106KA12L	10uF/35V	Capacitor	C12_PP1, C12_PP2, C18, C19_PP1, C19_PP2, C22_Ext1, C22_Ext2, C23_Ext1, C23_Ext2, C24_Ext1, C24_Ext2, C25_Ext1, C25_Ext2, C26_Ext1, C26_Ext2, C27_Ext1, C27_Ext2, C28, C34_PP1, C34_PP2, C35_PP1, C35_PP2	22
KEMET	C1206C475K8PAC	4,7uF/10V	Capacitor	C17, C37	2
DC COMPONENTS	SK110	SS18	Diode	D1_PP1, D1_PP2, D5_PP1, D5_PP2, D6_PP1, D6_PP2, D8_PP1, D8_PP2	8
DIOTEC SEMICONDUCTOR	SUF4003	SUF4003	Diode	D2_DRV1, D2_DRV2, D13	3
VISHAY	LL4148-GS18	LL4148	Diode	D3_DRV1, D3_DRV2	2
VISHAY	IZMC9V1-GS08	ZSMD-9V1	Zener Diode	D4_DRV1, D4_DRV2	2
VISHAY	BZM55C3V3	BZM55C4V3	Zener Diode	D7_DRV1, D7_DRV2	2
VISHAY	BZM55C2V7	BZM55C2V7	Zener Diode	D9	1
DIOTEC SEMICONDUCTOR	ZMC18	BZM55C18	Zener Diode	D10	1
TAIWAN SEMICONDUCTOR	TS4148-RYG	TS4148-RYG	Schottky Diode	D11, D12	2
FERROCORE	DER0705-47	DER0705-47	Inductor	L1_PP1, L1_PP2, L2_PP1, L2_PP2	4
FERROCORE	DLG-0504-101	100uH DLG 0504	Inductor	L3	1
OPTOSUPPLY	OSR50603C1E	OSR50603C1E	LED diode	LED1_DRV1, LED1_DRV2	2
OPTOSUPPLY	OSG80603C1C	OSG80603C1C	LED diode	LED4, LED5	2
WURTH	9774050360	M3, height 5mm	SMT Steel Spacer with internal Thread M3 WA-SM	MP1, MP2, MP3, MP4	4
WURTH	66201021022	Micro Power Connector	Male Dual Row Angled Header with Plastic Pegs	P1	1
WURTH	61301021021	Header 5X2	Header, 5-Pin, Dual row	P4, P5	2
ON SEMICONDUCTOR	FDV301N	FDV301N	N-Channel MOSFET	Q1_DRV1, Q1_DRV2, Q4_DRV1, Q4_DRV2	4
INFINEON (IRF)	IRF7343PBF	IRF7343PBF	N-Channel MOSFET	Q2_Ext1, Q2_Ext2	2
INFINEON (IRF)	IRLML0040TRPBF	IRLML0040TRPbf	N-Channel MOSFET	Q3_R1, Q3_R2	2
ROYAL OHM	SMD0805-330R	330R	Resistor	R1_DRV1, R1_DRV2, R17, R28_R1, R28_R2, R29_R1, R29_R2	7
ROYAL OHM	SMD0603-330R	330R	Resistor	R2_DRV1, R2_DRV2, R7_DRV1, R7_DRV2	4
ROYAL OHM	SMD0603-10K	10k	Resistor	R3_DRV1, R3_DRV2, R9_DRV1, R9_DRV2	4
ROYAL OHM	SMD0603-4K7	4k7	Resistor	R4_DRV1, R4_DRV2, R12, R26	4
ROYAL OHM	SMD0805-100R-1%	100R	Resistor	R5_DRV1, R5_DRV2	2
ROYAL OHM	SMD0603-100R	100R	Resistor	R6_DRV1, R6_DRV2, R8_DRV1, R8_DRV2	4
ROYAL OHM	HP06-10R1%	HP06-10R1%	Resistor	R10_DRV1, R10_DRV2, R11_DRV1, R11_DRV2	4
ROYAL OHM	SMD0805-1R-1%	1R	Resistor	R13, R23, R32	3
ROYAL OHM	SMD0603-1K	1k	Resistor	R14, R19, R20, R22	4
ROYAL OHM	SMD0805-33R-1%	33R	Resistor	R15, R16	2
ROYAL OHM	SMD0603-20K	20k	Resistor	R21	1
ROYAL OHM	HP2512-56R-1%	56R	Resistor	R24_R1, R24_R2, R27_R1, R27_R2, R30_R1, R30_R2, R31_R1, R31_R2	8
ROYAL OHM	SMD0603-33K	33k	Resistor	R25	1
ROYAL OHM	SMD0603-470R	470R	Resistor	R33_DRV1, R33_DRV2	2
AET	TR1404-2	EF20-HSP-SS-CPCI-CPCO	Transformer	T3_PP1, T3_PP2	2
BROADCOM (AVAGO)	ACPL-339J-000E	ACPL339J	Driver IGBT, MOSFET	U1_DRV1, U1_DRV2	2
TEXAS INSTRUMENTS	LM5030MMX/NOPB	LM5030	100V Push-Pull Current Mode PWM Controller	U2	1
TEXAS INSTRUMENTS	MC33063AD	MC33063A	DC/DC converter, Uin:3÷40V; Uout:1.25÷40V	U3	1
INFINEON (IRF)	IRF7380PBF	IRF7380PBF	N-Channel MOSFET	U6	1