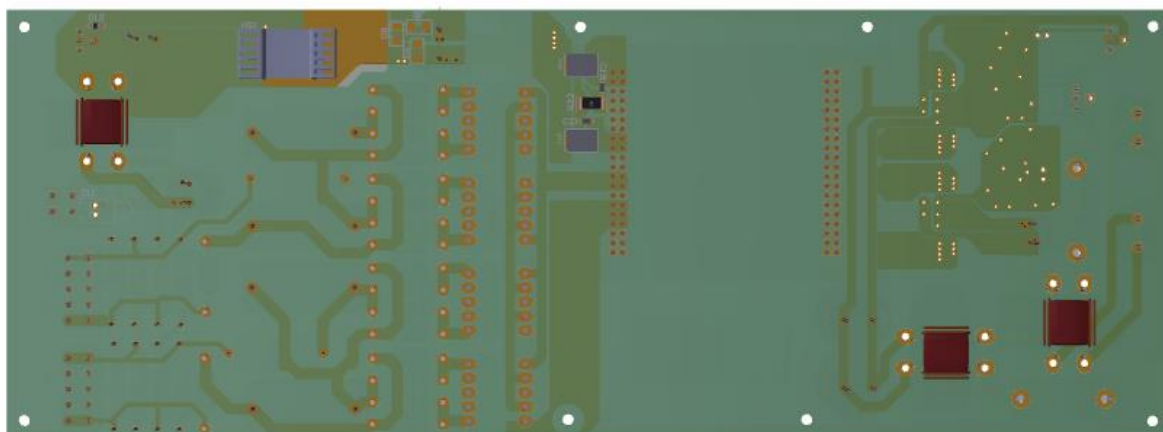
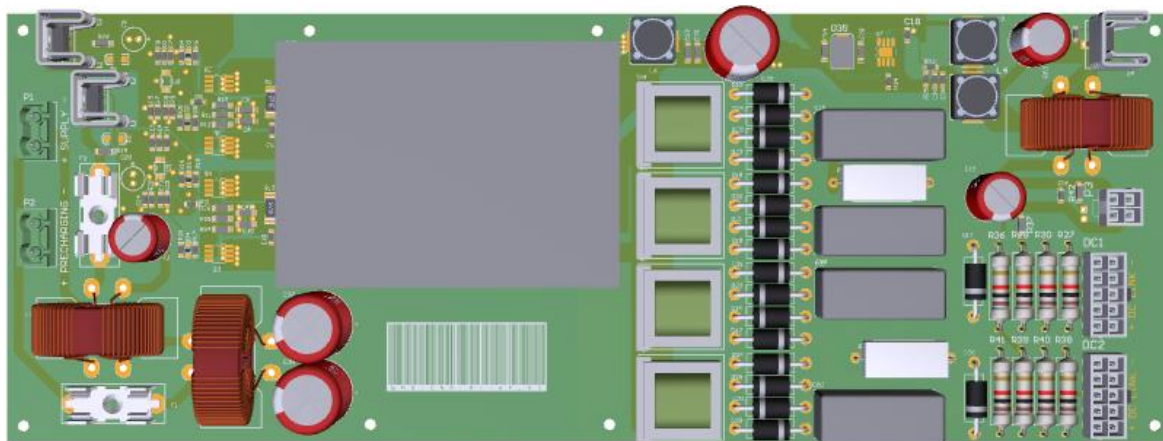


1. Rysunki poglądowe:



2. Specyfikacja:

Przetwornica impulsowa musi spełniać poniższe wymagania:

1. Obudowa:

a. Brak

2. Złącze zasilające:

a. Napięcie zasilania: 2 x +48V

b. W postaci dwunasto - pinowego złącza

3. Właściwości zasilacza:

a. Izolacja pomiędzy wejściami a wyjściami – trwałość 6kV

b. Moc: 2 x 50W

c. Napięcie wyjściowe 1: 24V DC, 2A

d. Napięcie wyjściowe 2: 900V DC, 50mA

4. PCB:

a. Grubość: PCB 1.55mm

b. Warstwy: 2

c. Solder maska: zielona

d. Rodzaj wykończenia: złoczone

e. Opisy: białe (warstwa TOP)

f. Test elektryczny

5. Emisja zakłóceń elektromagnetycznych zgodna z normami europejskimi

6. Wymiary: 103mm x 73mm



Załącznik nr 3

3. BOM

MF	MFPN	Comment	Description	Designator	Quantity
ALLEGRO MICROSYSTEMS	A8498SLJT	A8498	Buck converter IC	U7	1
NICHICON	UPM1J102MHD6	1000u/63V	Capacitor	C22, C37, C38	3
NICHICON	UPM1V331MHD6	330u/35	Capacitor	C15, C39	2
NICHICON	ULD1E101MED	100u/25V	Capacitor	C2, C20	2
AVX	12061C105K4T2A	1uF/100V	Capacitor	C3, C4, C23, C32, C33, C40, C41	7
KEMET	C0805X104K5RACAUTO	100nF	Capacitor	C5, C14, C17, C18	4
KEMET	C0805C101JCGAC	100pF/500V	Capacitor	C6, C10	2
KEMET	C0805C102K5RACAUTO	1nF	Capacitor	C7, C8, C9, C11, C13	5
KEMET	C0805X103K5RACTU	10nF	Capacitor	C12	1
SAMSUNG	CL21A475KBQNNNE	4,7uF/50V	Capacitor	C16, C35, C36	3
KEMET	C0805C331J2GACTU	330pF/200V	Capacitor	C19, C21	2
KEMET	R75PR4100CK30K	1u/630	Capacitor	C28, C29, C30, C31	4
AVX	12061C103K4T2A	10n	Capacitor	C34	1
DIODES	BZT52C12-7-F	12V	Zener Diode	D1, D6	2
SAMXON	GF1000/63	1000u/63V	Capacitor	C1	1
Taiwan Semiconductor	TS4148 RYG	TS4148 RYG	3 Amp Medium Power Silicon	D2, D3, D4, D5, D10	5
DIOTEC SEMICONDUCTOR	UF5408	UF5408	3 Amp Medium Power Silicon	D17, D18, D19, D20, D21, D22	18
ESKA	503.370	Fuse 2	Fuse	F1, F2	2
ESKA	503.360	Fuse 2	Fuse	F1, F3	3
FERYSTER	DTSN-33/10/10-V	DTS-31/3,3/7,8-V	Inductor	L1, L2, L3	3
INFINEON	IRF7815TRPBF	IRF7815	Single N-Channel HEXFET Power	Q1, Q2, Q3, Q4	4
FERROCORE	DE1209-47	47uH	Magnetic-Core Inductor	L4, L6, L9	3
OPTOSUPPLY	OSPG5161A-NO	LED0	Green led diode	D11	1
Texas Instruments	LM5030MM/NOPB	LM5030SD	100V Push-Pull Current Mode	U2, U3	2
ON Semiconductor	MC7805CTGOS-ND	MC7805	3-Terminal Positive Fixed Volt	U4	1
INFINEON	IRF540NPBF	IRF540	N-Channel Power MOSFET	Q5, Q6	2
ROYAL OHM	SP12-22R-1%	22R/3W	Resistor	R1, R13	2
ROYAL OHM	SMD0805-15K-1%	15k	Resistor	R2, R14	2
ROYAL OHM	SMD0805-47R-1%	47R	Resistor	R3, R4, R15, R16	4
ROYAL OHM	SMD0805-10K-1%	10k	Resistor	R5, R6, R17, R19	4
ROYAL OHM	SMD0805-3K3-1%	3k3	Resistor	R7, R9, R20, R23	4
ROYAL OHM	SMD0805-470R-1%	470R	Resistor	R8, R21	2
VIKING	CS1206-0R47-1%-LTC	0R47	Resistor	R10, R11, R12, R24, R25, R26	6
ROYAL OHM	SMD1206-10K-1%	10k	Resistor	R18, R28, R42	3
ROYAL OHM	HP2512-220R	220R	Resistor	R22	1
SR PASSIVES	MOF3WS-330K	330k	Resistor	R27, R29, R30, R36, R38, R39, R40	8
ROYAL OHM	PRW05WJW330B00	33R	Resistor	R31, R32	2
ROYAL OHM	SMD0805-33K-1%	33k	Resistor	R33, R34	2
ROYAL OHM	SMD0805-1K2-1%	1k2	Resistor	R35	1
ROYAL OHM	SMD1206-33K-1%	33k	Resistor	R37	1
ST MICROELECTRONICS	SMAJ13A-TR	SMAJ13A	Schottky Rectifier	D7, D8, D9	3
ST MICROELECTRONICS	STTH4R02S	STTH4R02S	Schottky Rectifier	D14, D16	2
DC COMPONENTS	SK310	SK310	Schottky Rectifier	D35	1
FISCHER ELEKTRONIK	FK24413D2PAK	Heatsink	Socket	HS1	1
STONECOLD	HS-011	Heatsink			3
TELZAM	2x18/90 (TR-1486)	TR-1486	Transformer (Coupled Inducto	TR3, TR4, TR5, TR6	4
WURTH ELEKTRONIK	64900421122	WE-4.20 mm Male Dual	WR-MPC4 Mini power connec	P3	1
WURTH ELEKTRONIK	64901021122	WE-4.20 mm Male Dual	WR-MPC4 Mini power connec	DC1, DC2	2
WURTH ELEKTRONIK	091311400102	WR-TBL Serie 3114	Socket	P1, P2	2
WURTH ELEKTRONIK	091351400002	WR-TBL Serie 3514	Connector		2
FISCHER ELEKTRONIK	AOS218/247/1		Thermally conductive pad: ceramic		1
3M	9080HL		Tape: fixing; W:25mm; L:50m; D:0.16mm; acrylic;		0,04m